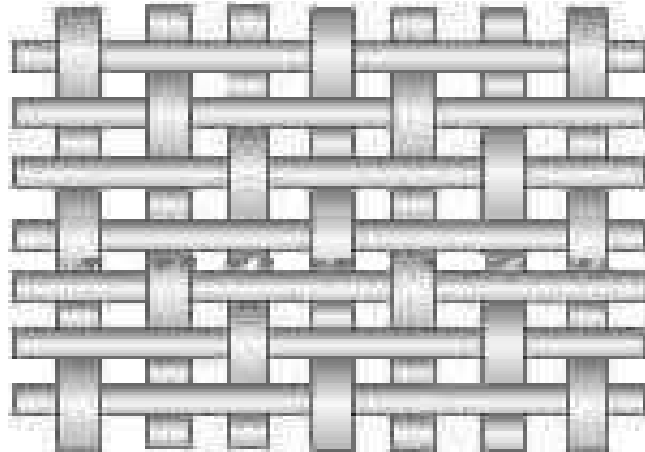


Heanjia Super-Metals Co., Ltd

Three Heddle Weave Wire Mesh or Cloth

Three heddle weave wire mesh is woven by passing individual warp wire alternately up and down each single and double weft wires. The properties of 3 heddle weave mesh include large aperture and flat surface, strong structure, high tensile strength, great air permeability, large flow rate and easily cleanability. It is commonly used in paper production, drier parts, conveyor belts, cultural paper, calendaring printing paper and hectograph.



Three Heddle Weave Wire Mesh or Cloth Specification

warp mm			weft mm			weight	open area
wire	aperture	mesh	wire	aperture	mesh	kg/m2	rate
0.35	0.7	24	0.4	1	18	1.45	97%
0.23	0.27	50	0.3	0.54	30	1.33	70%
0.2	0.217	60	0.24	0.405	40	1.17	66%
0.14	0.17	80	0.17	0.25	60	0.82	34%

Heanjia Super-Metals Co., Ltd